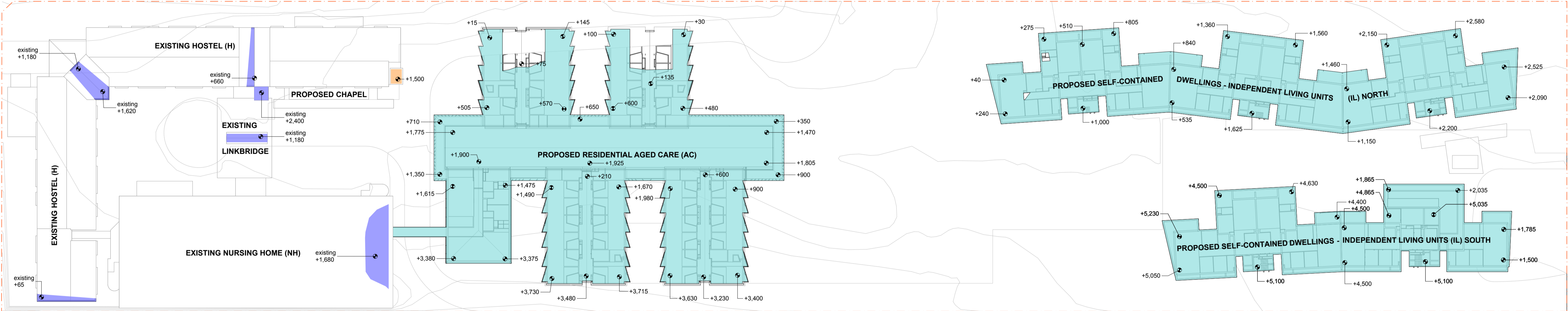
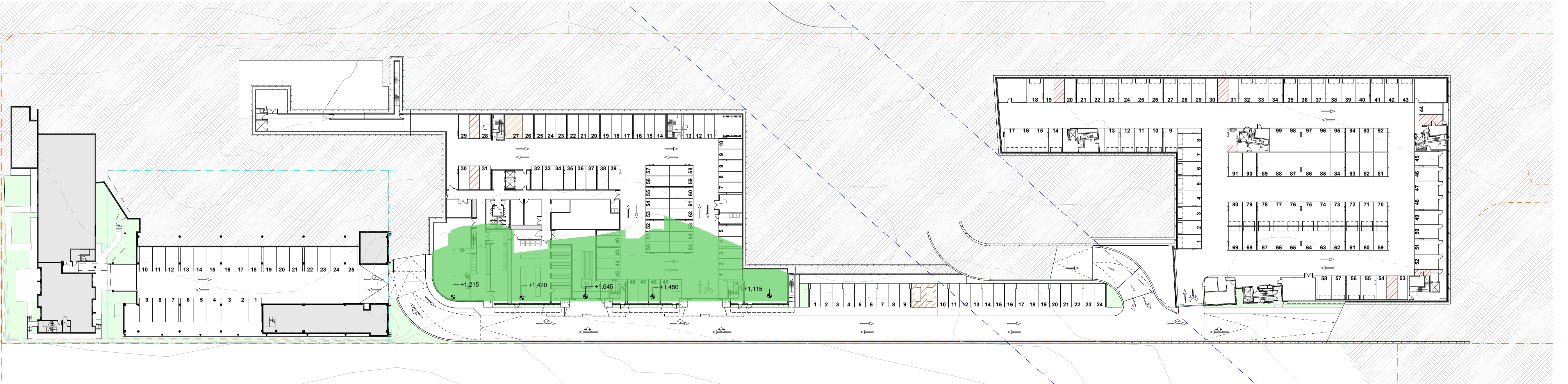


1 height plane 1:500



2 ceiling plane 1:500



3 diagram storey 1:500

LEGEND

- AREA OF PROPOSED BUILDING OVER 9m FROM NATURAL GROUND LEVEL
- AREA OF EXISTING BUILDING OVER 9m FROM NATURAL GROUND LEVEL
- AREA OF PROPOSED CEILING OVER 8m FROM NATURAL GROUND LEVEL
- AREA OF EXISTING CEILING OVER 8m FROM NATURAL GROUND LEVEL
- AREA OF PROPOSED BASEMENT OVER 1m ABOVE NATURAL GROUND LEVEL

PROJECT TEAM

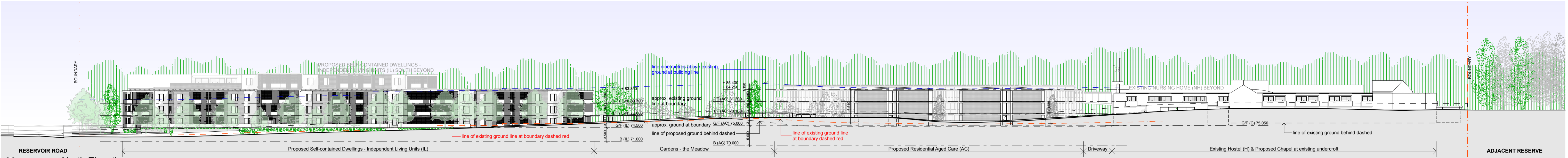
PLANNING CONSULTANT	Lawrence Winnacott & Associates
ACOUSTICS ENGINEER	JHA Consulting Engineers
BCA & ACCESSIBILITY CONSULTANT	BCA Logic
BUSHFIRE CONSULTANT	Advanced Bushfire Performance Solutions
CIVIL ENGINEER	Henry & Hymas
ELECTRICAL ENGINEER	JHA Consulting Engineers
ENVIRONMENTAL ENGINEER	JHA Consulting Engineers
GEOTECHNICAL ENGINEER	Geotechnique
LANDSCAPE ARCHITECT	Taylor Brammer Landscape Architects
STORMWATER ENGINEER	Roz Engineering
STRUCTURAL ENGINEER	Dennis Burt Consulting Engineers
MECHANICAL ENGINEER	JHA Consulting Engineers
MODEL MAKER	Kink Studio
TRAFFIC ENGINEER	Transport & Traffic Planning Associates
QUANTITY SURVEYOR	Clifton Morgan Consulting
VISUALISATIONS	Berga & Gonzalez
WASTE MANAGEMENT CONSULTANT	Auswide Consulting

Revitalisation and extension of
St. Hedwig Village
134-140 Reservoir Road
Blacktown NSW 2148

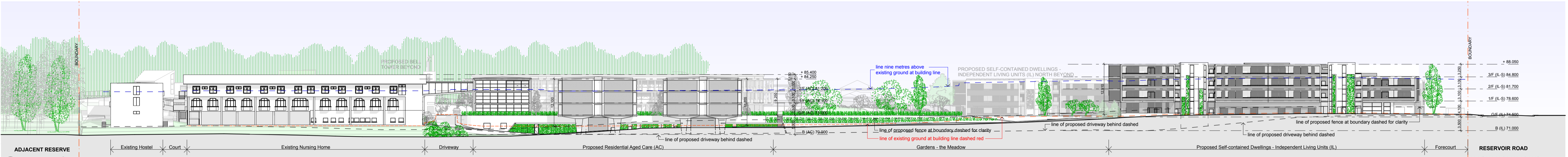
height calculation diagrams

DWG NO. 1508-015	ISSUE	B
DATE 10 FEB 2017	SCALE	1:500
STATUS DA	PAPER	A1
PROJECT NAME	1508 St. Hedwig	

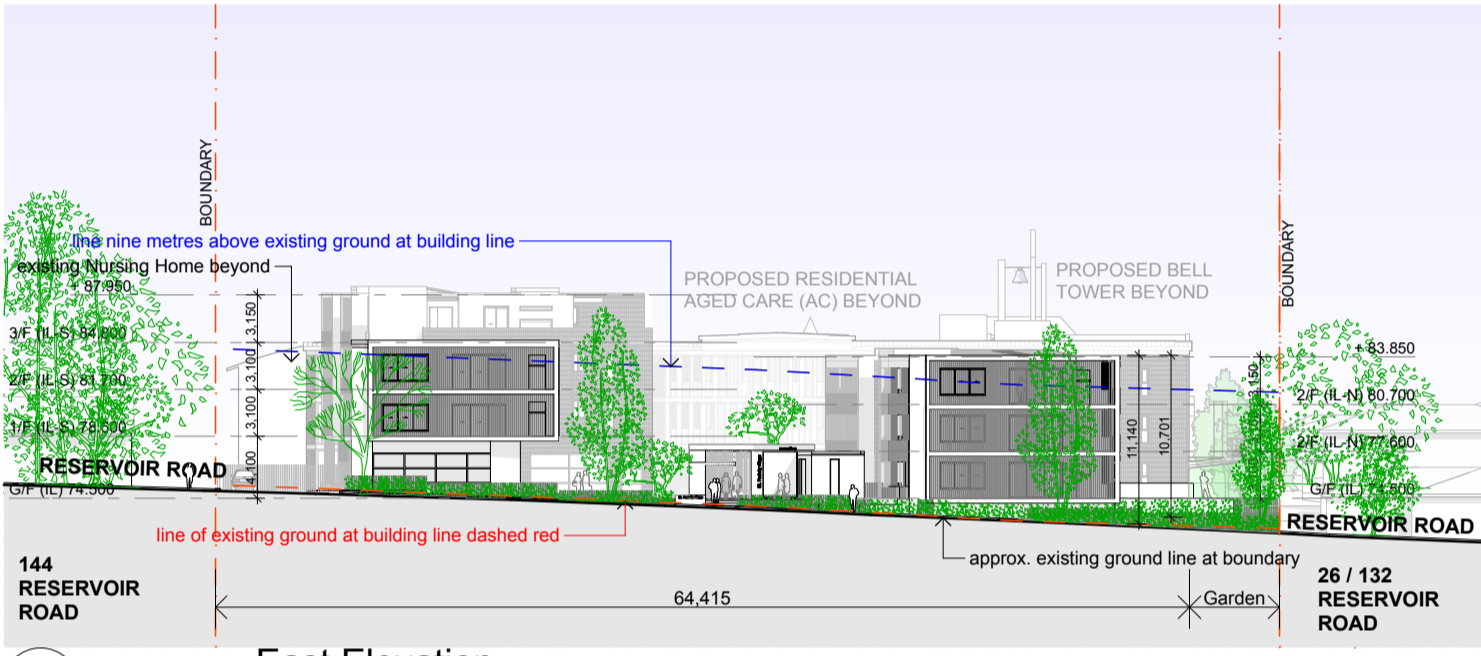
DO NOT SCALE FROM DRAWINGS. VERIFY ALL DIMENSIONS AND LEVELS ON SITE. RUDOLFFSON ALLIKER ASSOCIATES ARCHITECTS IS THE OWNER OF THE COPYRIGHT. SUBSTITUTION IN THESE DRAWINGS, THEY MUST NOT BE USED, REPRODUCED OR COPIED WITHOUT THE PRIOR CONSENT OF ARCHITECTS.



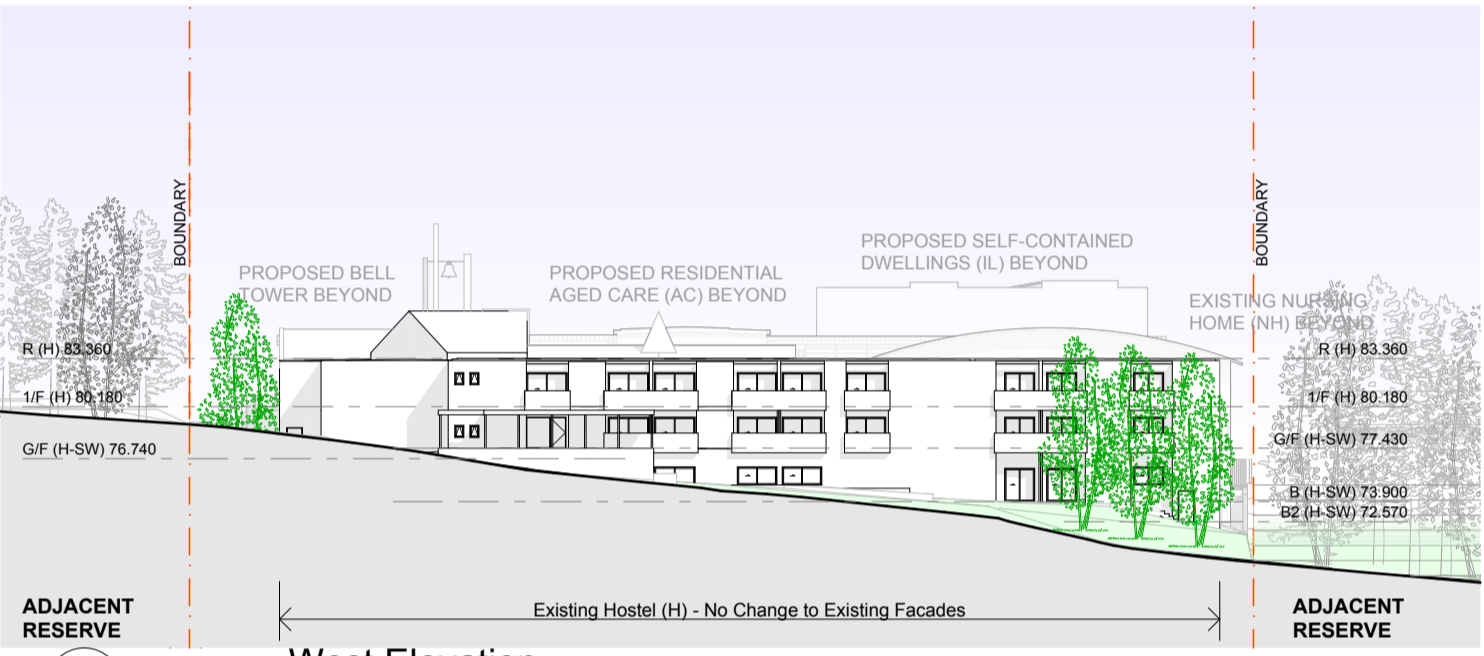
1 North Elevation
1:500



2 South Elevation
1:500



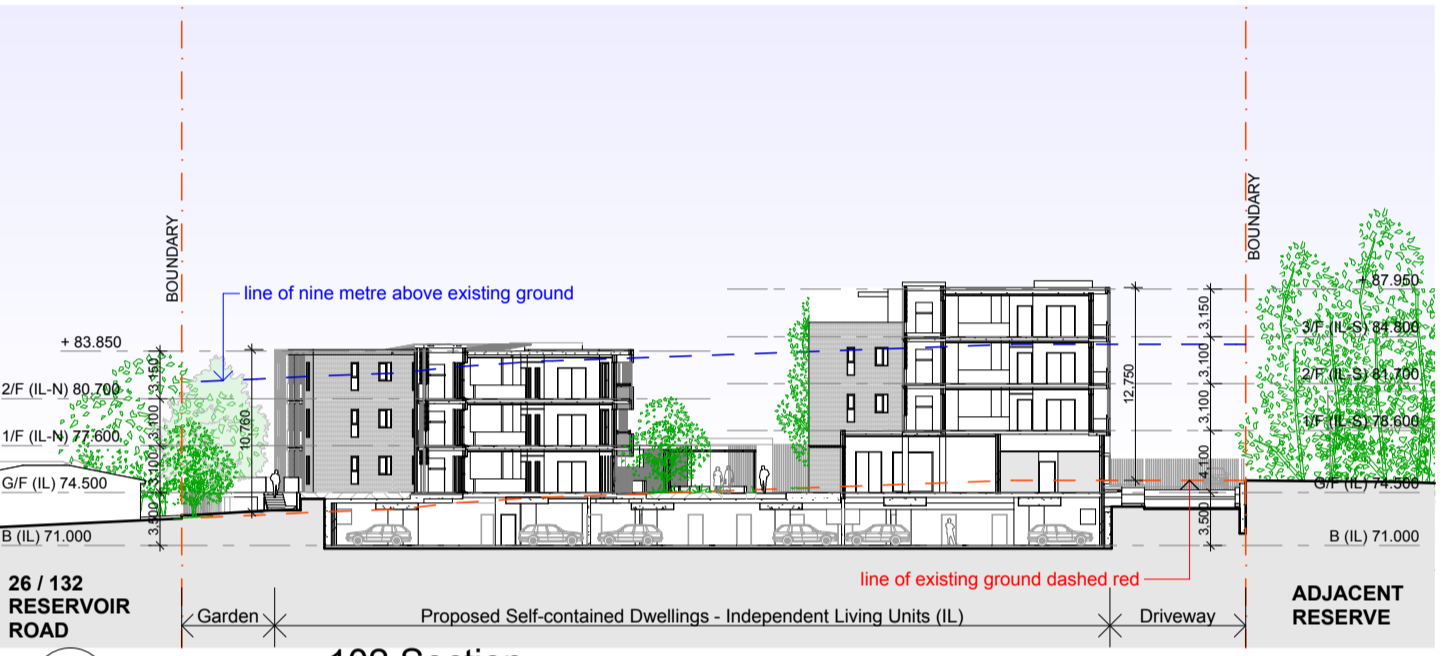
3 East Elevation
1:500



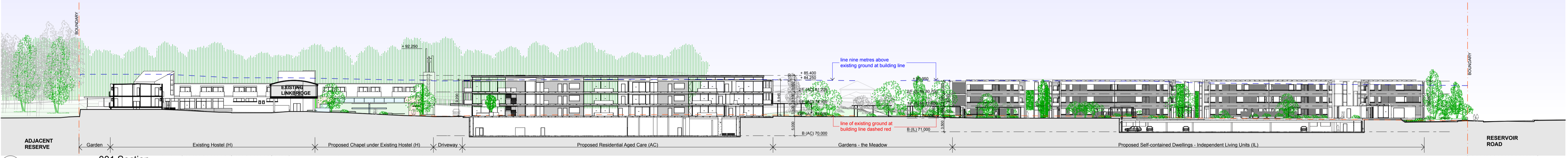
4 West Elevation
1:500



6 101 Section
1:500



7 102 Section
1:500



5 001 Section
1:500

